

WEATHERPROOFING ADVISORS LIMITED

Smurfit Kappa - Norwich

www.weatherproofing.co.uk



Weatherproofing Advisors were successfully appointed to complete major roofing works over a live factory



Smurfit Kappa Norwich, strategically located on Fishergate Street in the bustling heart of the city center, represents a significant operational hub running around the clock, every day of the week. The factory's extensive layout, housing expensive machinery across various sections, posed considerable challenges for our project. Our primary task involved meticulously stripping the existing roof and replacing it with a new, profiled metal buildup system, all while ensuring that the factory's operations remained uninterrupted.

This complex process demanded exceptional levels of planning and communication, a feat adeptly managed by Weatherproofing Advisors. Collaborating with Knight Frank, our team undertook a comprehensive condition report of the expansive 11,500m² roof, which comprised composite cladding, built-up systems with asbestos liners, and felt roofs. The roofs aged infrastructure had led to severe water ingress, significantly affecting daily operations and manifesting typical deterioration signs.

SPOTLIGHT ON SERVICE

The multifaceted nature of the roofing systems necessitated a phased approach, dividing the project into five distinct phases spread over ten months. This phased strategy ensured minimal disruption to Smurfit Kappa's ongoing operations. The new roofing system, now compliant with current building regulations, was implemented with support from our trusted suppliers, including Jorisode, Hambleside Danelaw, Ampteam, and IKO.

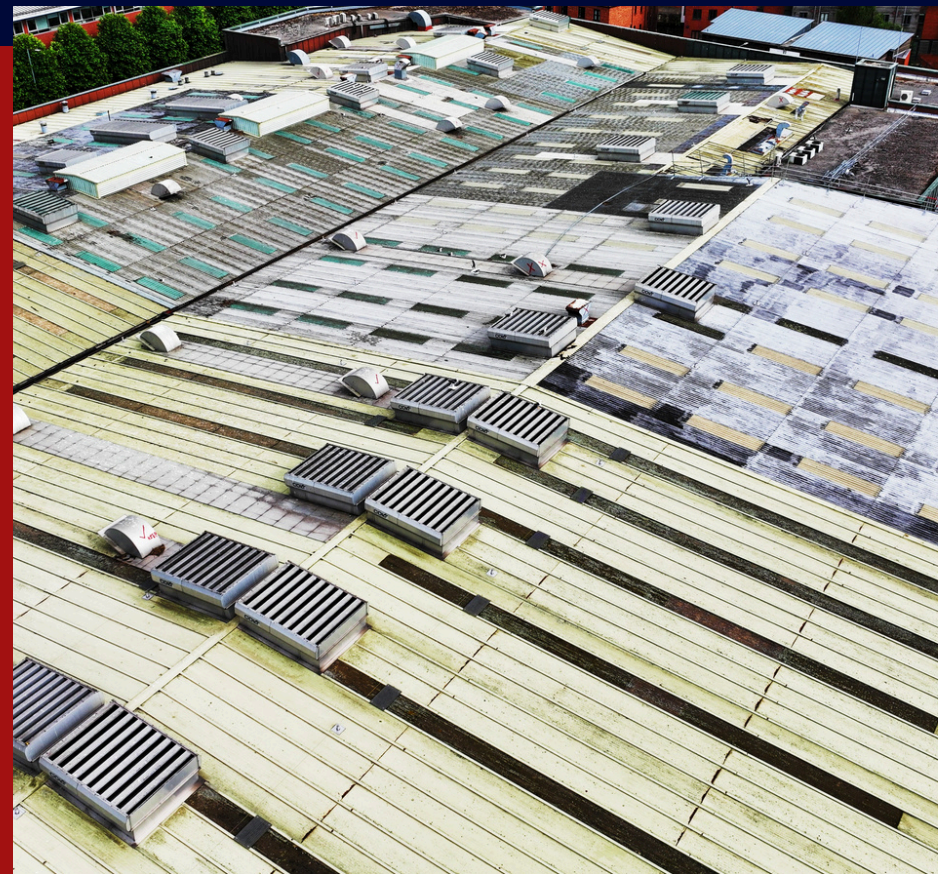
A new siphonic system was installed in the central valley alongside a comprehensive safety line system, facilitating a robust aftercare package designed to uphold the 25-year guarantee. The successful completion of this project not only revitalised the facility's roof but significantly enhanced the operational reliability and safety standards of Smurfit Kappa Norwich, securing its place as a critical player in the city's industrial landscape.



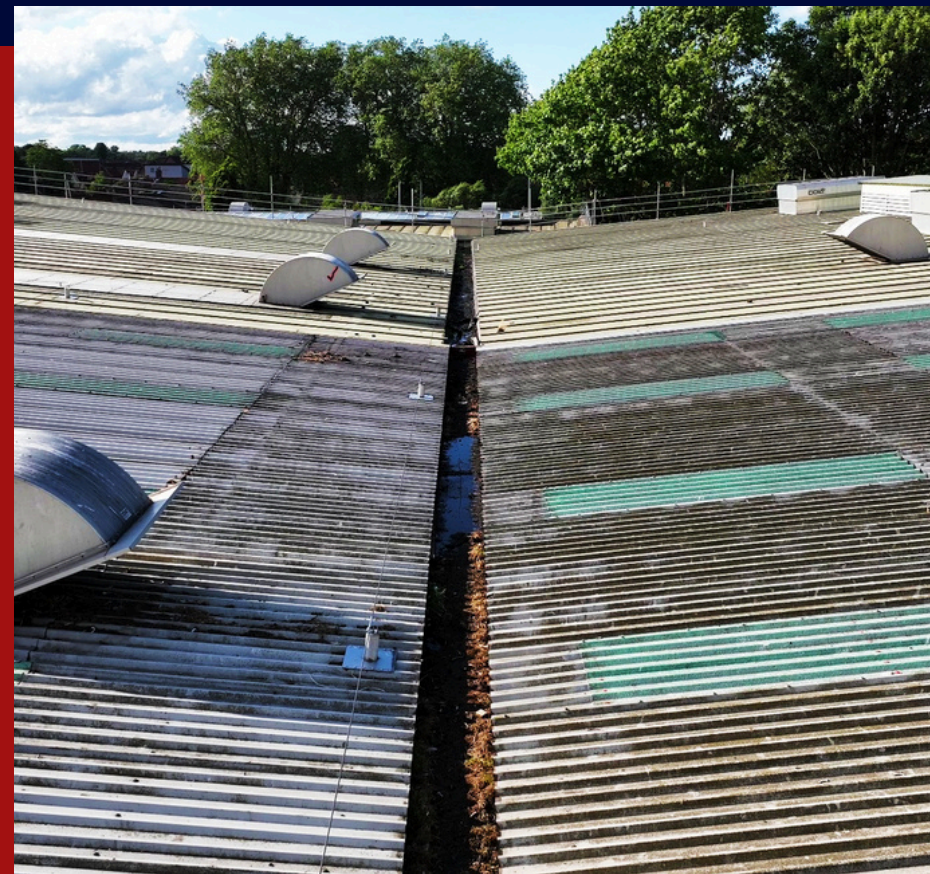
SPOTLIGHT ON SERVICE.

Project Gallery

BEFORE



OLD ROOF WHICH SHOWS A BUILD UP SYSTEM WITH AN ASBESTOS LINER AND COMPOSITE ROOFS.



OLD CENTRAL VALLEY WHICH CAUSED SEVERE WATER INGRESS.



OLD COMPOSITE ROOF WITH FAIRS ROOF LIGHTS.

SPOTLIGHT ON SERVICE.

Project Gallery

DURING



**REPLACEMENT OF THE
EXISTING COMPOSITE ROOF
SHEETS.**



**ONGOING REPLACEMENT OF
THE EXISTING ROOF.**



**REPLACEMENT OF THE OLD BUILT-
UP SYSTEM WITH AN ASBESTOS
LINER.**

SPOTLIGHT ON SERVICE.

Project Gallery

AFTER



**NEW BUILT U ROOF SYSTEM
WITH CLADDED PARAPET
WALLS.**



**NEW CENTRAL VALLEY LINER
USING UNIFOLD GUTTER
SYSTEM, ALONG WITH NEW
SIPHONIX.**



**OVERALL COMPLETION OF THE
PROJECT.**

SPOTLIGHT ON SERVICE.

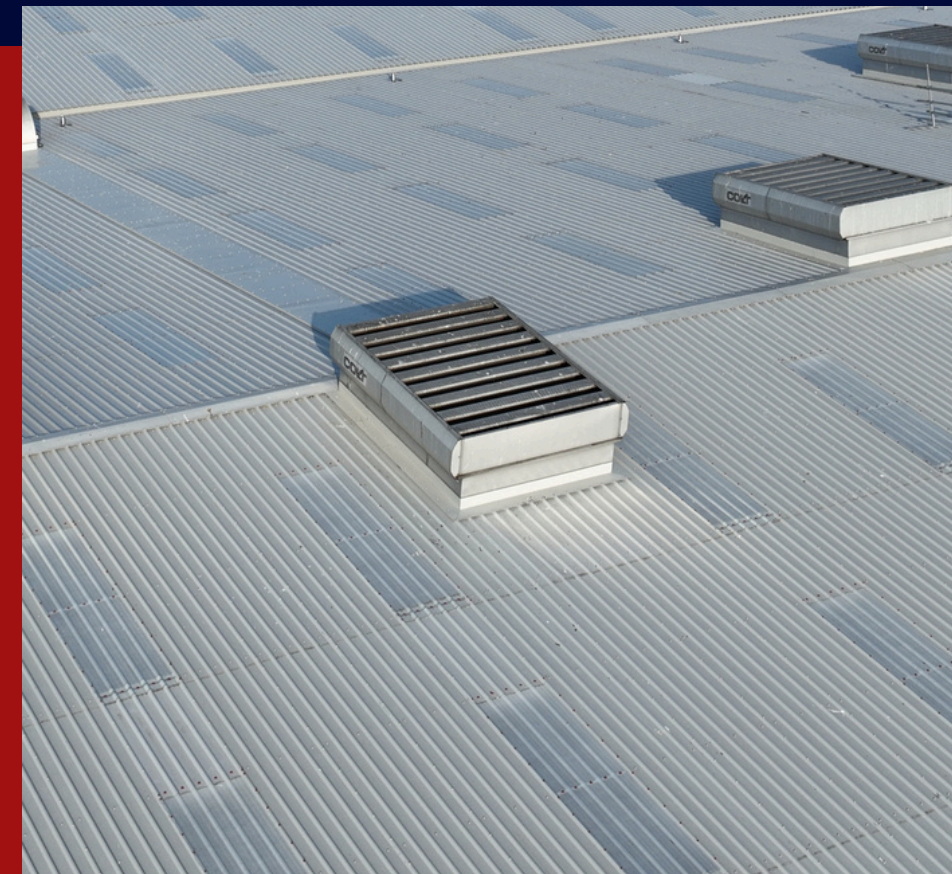
Project Gallery



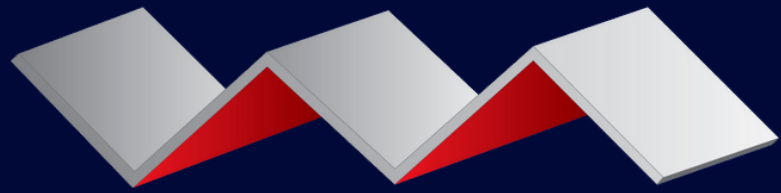
**A NEW CENTRAL VALLEY LINER
WAS INSTALLED UTILISING THE
UNIFOLD GUTTER SYSTEM**



QR



**VIEW OF ROOF VENTS REMOVED,
REFURBISHED AND REINSTALLED**



WEATHERPROOFING ADVISORS LIMITED

Setting new standards for the roofing industry

- ✓ Roof Cladding
- ✓ Wall Cladding
- ✓ Flat Roofing
- ✓ Gutter Refurbishment
- ✓ Slating & Tiling
- ✓ Green Roofing
- ✓ Non-Licensed Asbestos
- ✓ Dilapidations
- ✓ Safety Systems
- ✓ Surveying Services
- ✓ Solar PV
- ✓ Aftercare

Established over four decades, Weatherproofing Advisors continue to raise the bar with respect to their technical and service capabilities.

Specialising in the maintenance and refurbishment of roofing and cladding, Weatherproofing Advisors have built their enviable reputation around their passion for providing their customers with unparalleled levels of service.

Service the WPA way Our culture of continual improvement and going the extra mile for our customers and colleagues alike has enabled us to develop a true and lasting partnership with many of our clients.

Our customers say we bring real value to their business – over 93% of our customers said we had provided excellent levels of service in relation to quality of works, health and safety, communications and customer care.

All sectors covered from service centres across the UK

Weatherproofing Advisors Ltd offer both a regional and national capability through their service centres across the UK. We have experience of working in all market sectors and fully appreciate the different demands associated with each.

Good service does not happen by accident.



Scan me

Glasgow

Advisor House
West Avenue
Blantyre Industrial Estate
Blantyre
G72 0UZ

T: 01698 826 928
E: glasgow@

Newcastle

Advisor House
Archer Street
Rosehill
Wallsend
Newcastle
NE28 7DJ

T: 0191 263 3553
E: newcastle@

Merseyside

Advisor House
Sandwash Close
Diamond Business Park
Rainford
St Helens
WA11 8LU

T: 01744 885 885
E: merseyside@

Bristol

Gladstone House
Gladstone Drive
Soundwell
Bristol
BS16 4RU

T: 0117 500 123
E: bristol@

London

Advisor House
116–118 Station Road East
Oxted
Surrey
RH8 0QA

T: 0203 617 8333
E: london@



@WPAItd



@WPA ltd



@WPAItd



@Weatherproofing-advisors



weatherproofing.co.uk



wpaportal.co.uk