

WEATHERPROOFING ADVISORS LIMITED

# Tesco Stores Ltd - Formby

[www.weatherproofing.co.uk](http://www.weatherproofing.co.uk)





# Revitalizing Tesco's Infrastructure: A Comprehensive Roof Renovation Merging Longevity, Water-Proofing, and Advanced Sustainable Energy Solutions

---

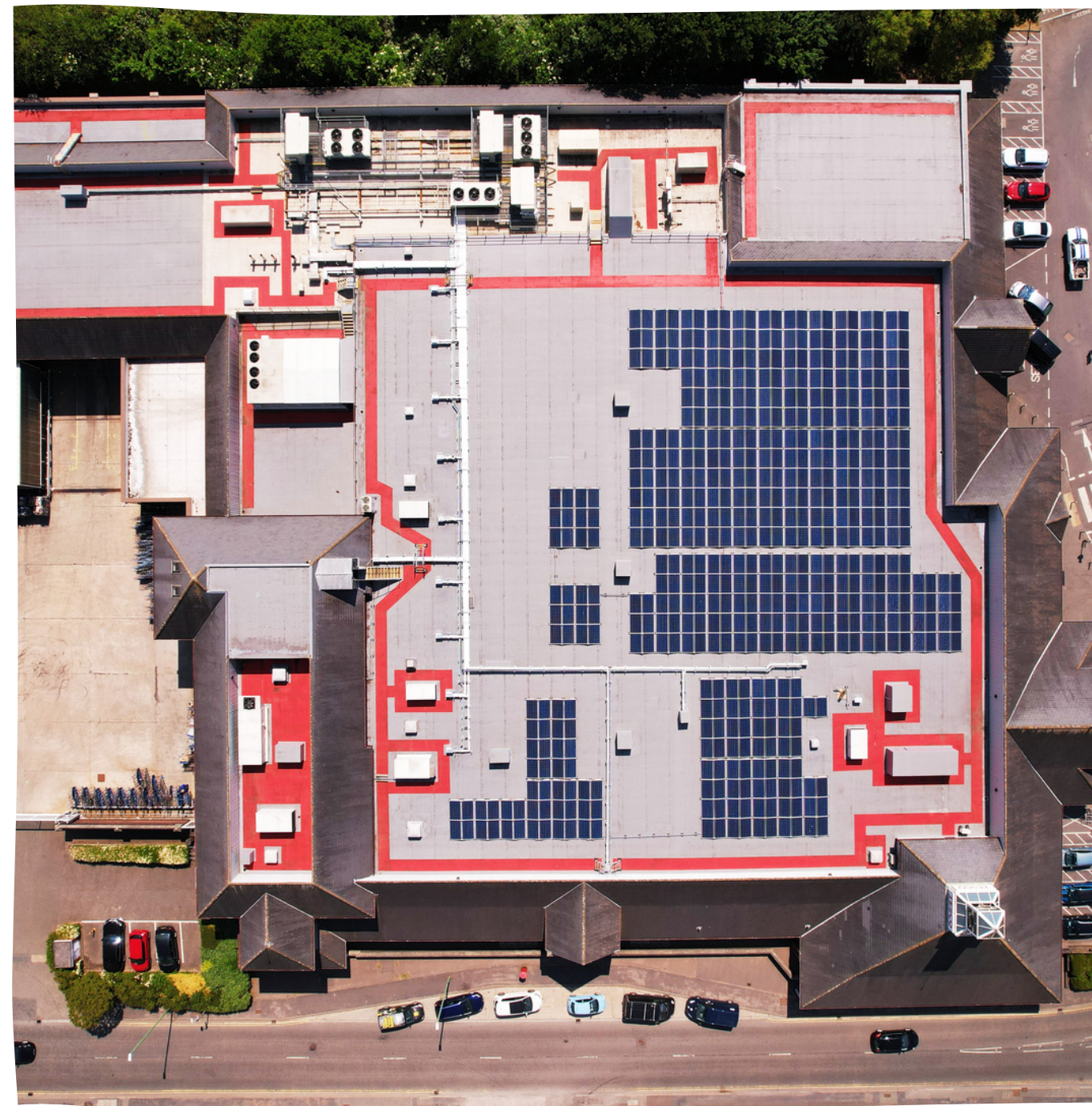
As part of Tesco's commitment to improving the experience of their customers, Weatherproofing Advisors were commissioned to survey the roof and provide a detailed report of its condition and reasons behind the water ingress.

Following the detailed survey, it was determined that the existing single-ply membrane was in excess of 25 years old and displaying numerous signs of 'End of Life'. Weatherproofing Advisors provided a solution that would eliminate the water ingress and would be guaranteed for a period of no less than 25 years.

In the Main field areas, a PVC single-ply membrane was installed over the existing covering with a 300g geotextile separation layer. In areas where there was significant plant, A PMMA liquid costing system was applied. To ensure clear access routes for ongoing maintenance a Red PMMA walkway was incorporated onto both waterproof coverings.

Tesco has pledged to a new Group-Wide net zero target of 2035 for its open operations. With this in mind, they have embarked on an ambitious PV installation programme, subsequently a new 144.48kWp PV system was designed and installed.





**Top Left** – Safe access to the roof has been installed, with edge protection provided by the high-level parapet.

**Bottom Left** – The existing flat roof has no access for future maintenance.

**Bottom Right** – additional view of the roof area.

**Top Right** – Standard Site Security Setup

**Main Picture** – overview of the new roof covering.





# Setting new standards for the roofing industry

Established over four decades, Weatherproofing Advisors continue to raise the bar with respect to their technical and service capabilities.

Specialising in the maintenance and refurbishment of roofing and cladding, Weatherproofing Advisors have built their enviable reputation around their passion for providing their customers with unparalleled levels of service.

Service the WPA way Our culture of continual improvement and going the extra mile for our customers and colleagues alike has enabled us to develop a true and lasting partnership with many of our clients.

Our customers say we bring real value to their business – over 93% of our customers said we had provided excellent levels of service in relation to quality of works, health and safety, communications and customer care.

All sectors covered from service centres across the UK

Weatherproofing Advisors Ltd offer both a regional and national capability through their service centres across the UK. We have experience of working in all market sectors and fully appreciate the different demands associated with each.

Good service does not happen by accident.



## Glasgow

Advisor House  
West Avenue  
Blantyre Industrial Estate  
Blantyre  
G72 0UZ

T: 01698 826 928  
E: glasgow@

## Newcastle

Advisor House  
Archer Street  
Rosehill  
Wallsend  
Newcastle  
NE28 7DJ

T: 0191 263 3553  
E: newcastle@

## Merseyside

Advisor House  
Sandwash Close  
Diamond Business Park  
Rainford  
St Helens  
WA11 8LU

T: 01744 885 885  
E: merseyside@

## Bristol

Gladstone House  
Gladstone Drive  
Soundwell  
Bristol  
BS16 4RU

T: 0117 500 123  
E: bristol@

## London

Advisor House  
116–118 Station Road East  
Oxted  
Surrey  
RH8 0QA

T: 0203 617 8333  
E: london@



[@WPAItd](#)



[@WPA ltd](#)



[@WPAItd](#)



[@Weatherproofing-advisors](#)



[weatherproofing.co.uk](#)



[wpaportal.co.uk](#)